

ARTUN SAMRÁMNGIARHÖNDJUR

HÖNNUNARSTIG: VERKTEIKNING

VEGGUR	ÞYKKT	STEYPA	GRUNNBENDING LÁRÉTT	GRUNNBENDING LÓÐRÉTT
V01a	200	C30/37	K10 c/c 150	K10 c/c 200
V02a	200	C30/37	K10 c/c 150	K10 c/c 200
V03a	200	C30/37	K10 c/c 150	K10 c/c 200
V04a	200	C30/37	K10 c/c 150	K10 c/c 200
V05a	200	C30/37	K10 c/c 150	K10 c/c 200
V06a	200	C30/37	K10 c/c 150	K10 c/c 200
V07a	200	C30/37	K10 c/c 150	K10 c/c 200
V08a	200	C30/37	K10 c/c 150	K10 c/c 200
V09a	200	C30/37	K10 c/c 150	K10 c/c 200
V10a	200	C30/37	K10 c/c 150	K10 c/c 200
V11a	200	C30/37	K10 c/c 150	K10 c/c 200
V12a	200	C30/37	K10 c/c 150	K10 c/c 200
V13a	200	C30/37	K10 c/c 150	K10 c/c 200
V14a	200	C30/37	K10 c/c 150	K10 c/c 200
V15a	200	C30/37	K10 c/c 150	K10 c/c 200
V16a	200	C30/37	K10 c/c 150	K10 c/c 200
V17a	200	C30/37	K10 c/c 150	K10 c/c 200
V18a	200	C30/37	K10 c/c 150	K10 c/c 200
V19a	200	C30/37	K10 c/c 150	K10 c/c 200
V20a	250	C30/37	K10 c/c 150	K10 c/c 200
V21a	250	C30/37	K10 c/c 150	K10 c/c 200
V22a	200	C30/37	K10 c/c 150	K10 c/c 200
V23a	200	C30/37	K10 c/c 150	K10 c/c 200
V24a	250	C30/37	K10 c/c 150	K10 c/c 200
V25a	200	C30/37	K10 c/c 150	K10 c/c 200
V26a	200	C30/37	K10 c/c 150	K10 c/c 200
V27a	200	C30/37	K10 c/c 150	K10 c/c 200
V30a	200	C30/37	K10 c/c 150	K10 c/c 200
V31a	270	C30/37	K10 c/c 150	K10 c/c 200
V32a	200	C30/37	K10 c/c 150	K10 c/c 200
V40a	200	C30/37	K10 c/c 150	K10 c/c 200
V41a	200	C30/37	K10 c/c 150	K10 c/c 200
V42a	180	C30/37	K10 c/c 150	K10 c/c 200
V43a	180	C30/37	K10 c/c 150	K10 c/c 200
V44a	180	C30/37	K10 c/c 150	K10 c/c 200
V45a	180	C30/37	K10 c/c 150	K10 c/c 200
V46a	180	C30/37	K10 c/c 150	K10 c/c 200
V47a	180	C30/37	K10 c/c 150	K10 c/c 200
V48a	180	C30/37	K10 c/c 150	K10 c/c 200
V49a	180	C30/37	K10 c/c 150	K10 c/c 200
V50a	180	C30/37	K10 c/c 150	K10 c/c 200
V51a	180	C30/37	K10 c/c 150	K10 c/c 200
V52a	180	C30/37	K10 c/c 150	K10 c/c 200
V53a	180	C30/37	K10 c/c 150	K10 c/c 200
V54a	180	C30/37	K10 c/c 150	K10 c/c 200
V55a	180	C30/37	K10 c/c 150	K10 c/c 200
V56a	180	C30/37	K10 c/c 150	K10 c/c 200
V57a	180	C30/37	K10 c/c 150	K10 c/c 200
V58a	180	C30/37	K10 c/c 150	K10 c/c 200
V59a	180	C30/37	K10 c/c 150	K10 c/c 200
V60a	180	C30/37	K10 c/c 150	K10 c/c 200
V61a	180	C30/37	K10 c/c 150	K10 c/c 200
V62a	180	C30/37	K10 c/c 150	K10 c/c 200
V63a	180	C30/37	K10 c/c 150	K10 c/c 200
V64a	180	C30/37	K10 c/c 150	K10 c/c 200
V65a	180	C30/37	K10 c/c 150	K10 c/c 150
V66a	180	C30/37	K10 c/c 150	K10 c/c 150
V68a	180	C30/37	K10 c/c 150	K10 c/c 200
V70a	180	C30/37	K10 c/c 150	K10 c/c 200

VEGGUR	ÞYKKT	STEYPA	GRUNNBENDING LÁRÉTT	GRUNNBENDING LÓÐRÉTT
V01b	200	C30/37	K10 c/c 150	K10 c/c 200
V02b	200	C30/37	K10 c/c 150	K10 c/c 200
V03b	200	C30/37	K10 c/c 150	K10 c/c 200
V04b	200	C30/37	K10 c/c 150	K10 c/c 200
V05b	200	C30/37	K10 c/c 150	K10 c/c 200
V06b	200	C30/37	K10 c/c 150	K10 c/c 200
V07b	200	C30/37	K10 c/c 150	K10 c/c 200
V08b	200	C30/37	K10 c/c 150	K10 c/c 200
V09b	200	C30/37	K10 c/c 150	K10 c/c 200
V10b	200	C30/37	K10 c/c 150	K10 c/c 200
V11b	200	C30/37	K10 c/c 150	K10 c/c 200
V12b	200	C30/37	K10 c/c 150	K10 c/c 200
V13b	200	C30/37	K10 c/c 150	K10 c/c 200
V14b	200	C30/37	K10 c/c 150	K10 c/c 200
V15b	200	C30/37	K10 c/c 150	K10 c/c 200
V17b	200	C30/37	K10 c/c 150	K10 c/c 200
V18b	200	C30/37	K10 c/c 150	K10 c/c 200
V19b	180	C30/37	K10 c/c 150	K10 c/c 200
V20b	180	C30/37	K10 c/c 150	K10 c/c 200
V21b	180	C30/37	K10 c/c 150	K10 c/c 200
V22b	180	C30/37	K10 c/c 150	K10 c/c 200
V23b	180	C30/37	K10 c/c 150	K10 c/c 200
V24b	180	C30/37	K10 c/c 150	K10 c/c 200
V25b	180	C30/37	K10 c/c 150	K10 c/c 200
V26b	180	C30/37	K10 c/c 150	K10 c/c 200
V27b	180	C30/37	K10 c/c 150	K10 c/c 200
V28b	180	C30/37	K10 c/c 150	K10 c/c 200
V29b	180	C30/37	K10 c/c 150	K10 c/c 200
V30b	180	C30/37	K10 c/c 150	K10 c/c 200
V31b	180	C30/37	K10 c/c 150	K10 c/c 200
V32b	180	C30/37	K10 c/c 150	K10 c/c 200
V33b	180	C30/37	K10 c/c 150	K10 c/c 200
V34b	180	C30/37	K10 c/c 150	K10 c/c 200
V35b	180	C30/37	K10 c/c 150	K10 c/c 200
V36b	200	C30/37	K10 c/c 150	K10 c/c 200
V39b	200	C30/37	K10 c/c 150	K10 c/c 200
V40b	200	C30/37	K10 c/c 150	K10 c/c 200
V41b	200	C30/37	K10 c/c 150	K10 c/c 200
V42b	200	C30/37	K10 c/c 150	K10 c/c 200
V43b	200	C30/37	K10 c/c 150	K10 c/c 200

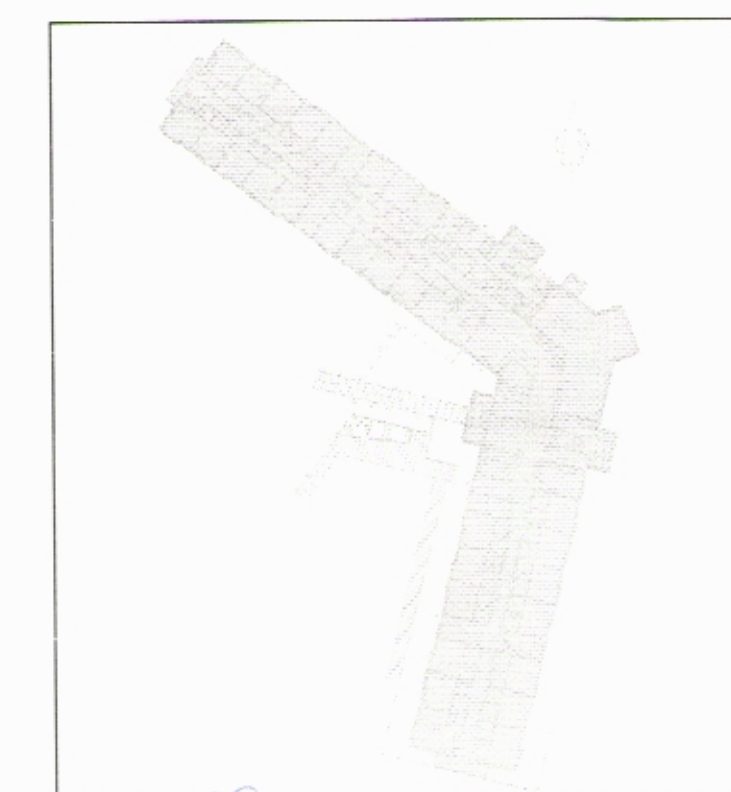
Tilvísanir:

Almennar skýringar
Almenn snið
Sérþending (J1)

B-A-1
B-SD-1
B-SD-1-2

Lagnateikningar
Gataplön
Teikningar arkitekta

A 17.01.2014 Vegga notum bæsi vö
DR. DAGS BREYTING
ADH ALB
REKNI TEKN.



Dr. Snorri Snorr
VSÓ RÁÐGJÖF

BORGARTÚNI 20, 105 REYKJAVÍK, SMÍ 585-8000, SÁMÞYKKI 585-8010, NETFANGI vs@vs.is

Snorrargata 3, Siglufirði
Hótel sunna

Burðarvirki
Veggjafía

HANNAÐ/TEKNI
YFIR/ARID.
SAMÞYKKI
K1230651-2567K

KVARDI
VERKNR.
13211

TEKNI. NR.
B-A-2
A